

THIS INSTRUMENT WAS PREPARED BY:
RICKIE C. WEINBERG OF
CARMAN-PROCTOR AND ASSOCIATES, INC.
CONSULTING ENGINEERS
 SURVEYORS ENGINEERS PLANNERS
 6191 WEST ATLANTIC BLVD., MARGATE, FLORIDA 33063
 JULY 1996 950508C DCD

SMITH DAIRY EAST P.U.D.

LAKEVIEW ESTATES PHASE 1

A REPLAT OF A PORTION OF BLOCK 38, "PALM BEACH FARMS CO. PLAT NO. 3" (P.B.2, PGS.45-54, P.B.C.R.) AND THE RIGHTS-OF-WAY INCLUDED THEREIN, IN SECTION 4, TOWNSHIP 45 SOUTH, RANGE 42 EAST, PALM BEACH COUNTY, FLORIDA

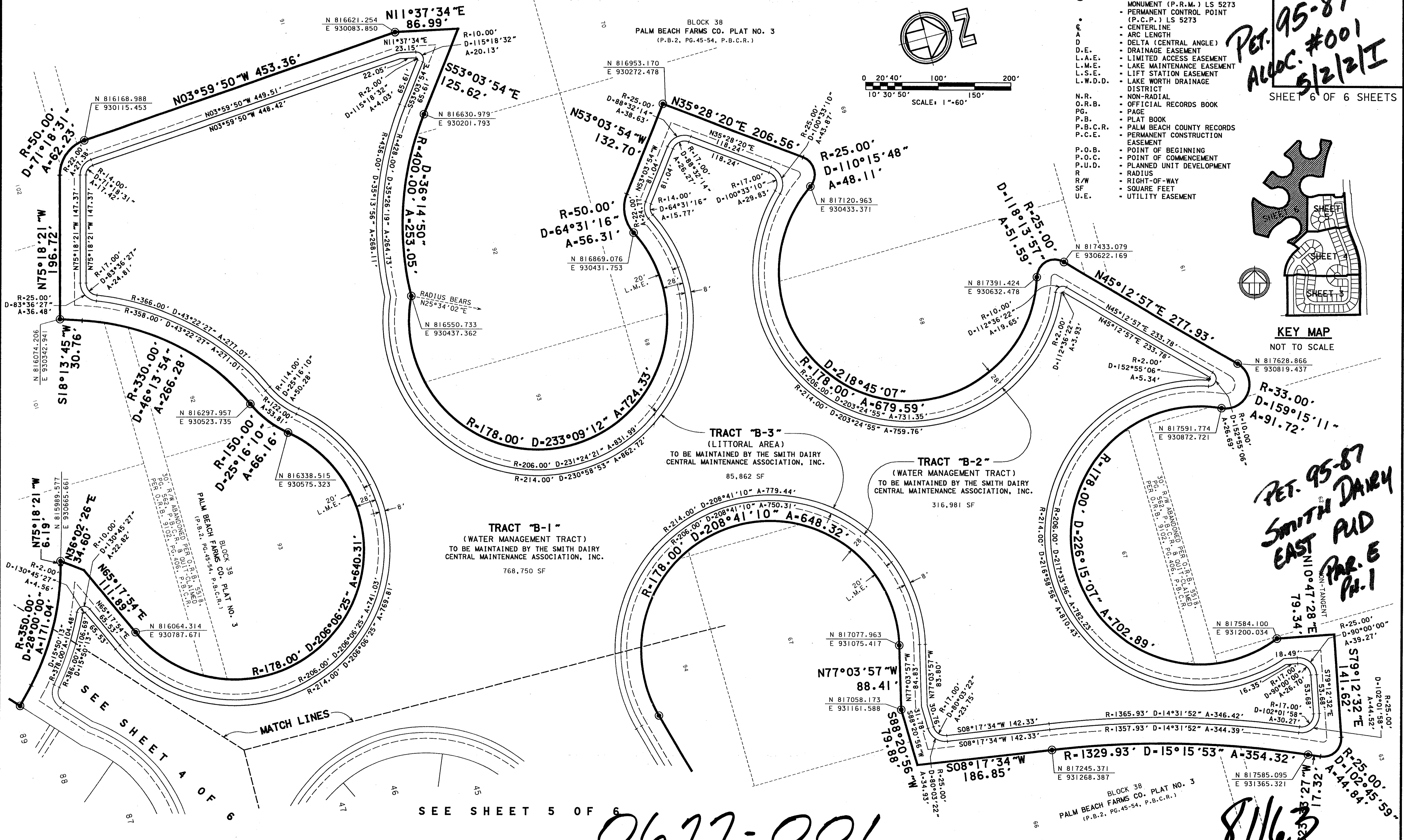
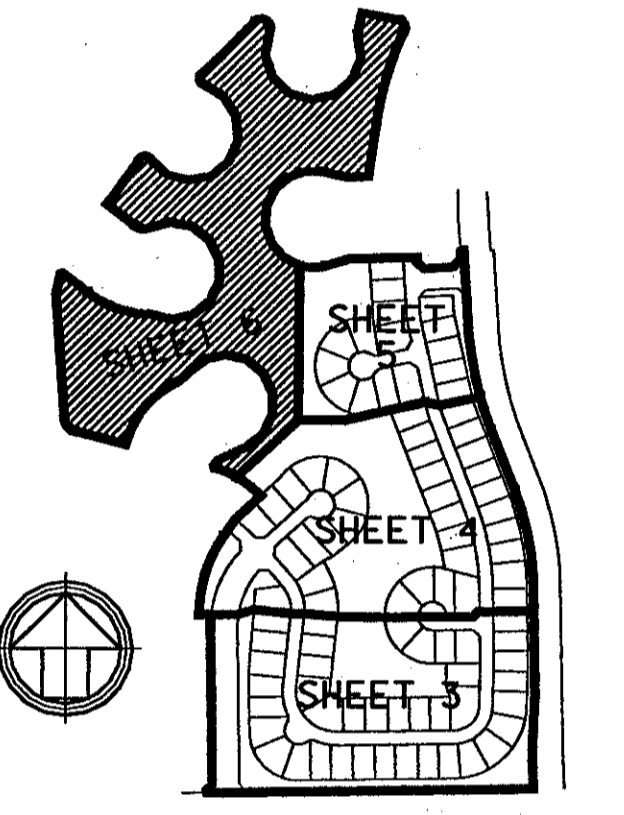
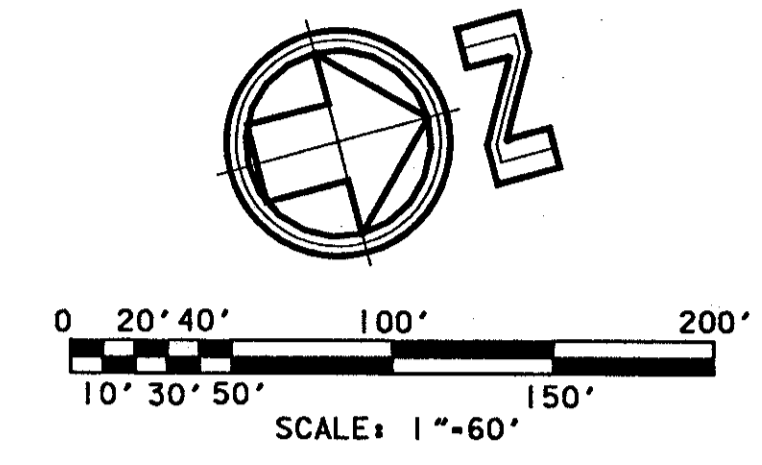
0677-001

63

*PET. 95-87
 ALLOC. #001
 5/2/21*

SHEET 6 OF 6 SHEETS

- LEGEND:**
- SET PERMANENT REFERENCE MONUMENT (P.R.M.) LS 5273
 - PERMANENT CONTROL POINT (P.C.P.) LS 5273
 - CENTERLINE
 - ARC LENGTH
 - DELTA (CENTRAL ANGLE)
 - DRAINAGE EASEMENT
 - LIMITED ACCESS EASEMENT
 - LAKE MAINTENANCE EASEMENT
 - LIFT STATION EASEMENT
 - LAKE WORTH DRAINAGE DISTRICT
 - NON-RADIAL
 - OFFICIAL RECORDS BOOK
 - PAGE
 - PLAT BOOK
 - PALM BEACH COUNTY RECORDS
 - PERMANENT CONSTRUCTION EASEMENT
 - POINT OF BEGINNING
 - POINT OF COMMENCEMENT
 - PLANNED UNIT DEVELOPMENT
 - RADIUS
 - RIGHT-OF-WAY
 - SQUARE FEET
 - UTILITY EASEMENT



SUBDIVISION # PHASE I
 BOOK 81 PAGE 63
 FLOOD ZONE B FLOOD MAP #1704
 ZONING R-49
 QUAD # 49
 SS -
 ZIP CODE 33463
 P.D. NAME LAKEVIEW ESTATES
 FILE: g:\projects\sm08\sm08c06p6.dgn
 DATE: 24-Dec-86 11:46

*PET. 95-87
 SMITH DAIRY
 EAST PLD
 PAR. E
 PL. 1*

0677-001

8/1/63

SEE SHEET 5 OF 6

SEE SHEET A OF 6